

# M|C|P|S 8.1

MULTI CHANNEL PROCESS SYSTEM

for Windows 7 / 8.x / 10 / 11 / S2012 / S2016 / S2019 / S2022

## Installation Manual

*Date: August 2023*

©2022-2023 CAD Computer GmbH & Co. KG All rights reserved

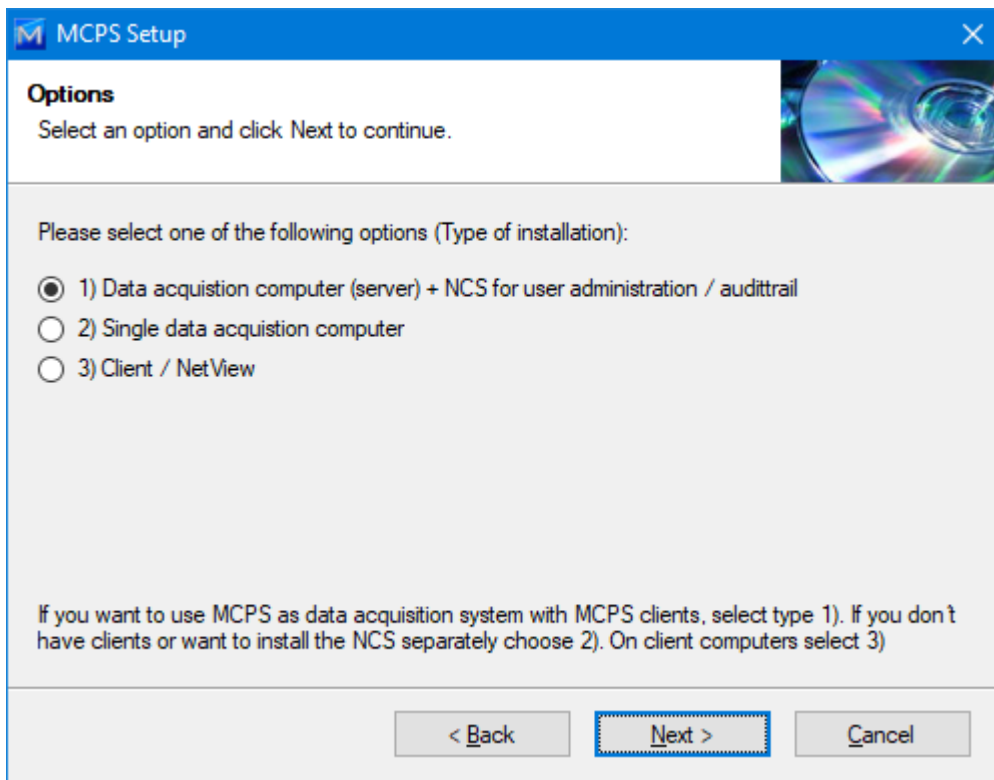
## 1. Installation

Please run start.exe from the installation medium or a related setup program (mcps8\_1setup8.1.x.xx.exe)

### License agreement

Acceptance of the license terms is required for installation. CAD Computer GmbH&Co.KG reserves certain ownership and reproduction rights. The MCPS software and its components are not purchased, but instead a user license. This is explained in detail in the license text.

### Options



There are three variants for installation:

1. DAQ server + NCS.

MCPS is installed as a measurement package and the corresponding password must be entered at startup or in the MCPS settings. If the data should also be available to so-called clients, which are installed on user computers, the NCS is usually installed on the measuring computer. This service takes over the central user administration for measurement computers and clients as well as the audit trail for the ERES option. The service is started during installation and is therefore directly available.

2. Single DAQ server

If no clients are planned or an additional measuring computer is to be installed, this option must be selected.

3. Client / NetView  
Evaluation computer without own measurement features

## Installation folder

Please do **not** use the default programs directory of Windows. In this case, the configuration data and measurement projects must be stored in separate folders. This makes a backup and especially a later move to other computers more difficult. Select a directory on any partition that has WRITE PERMISSIONS.

MCPS is a 32bit application and uses a maximum of 4GB of Ram.

## 2. Password

Each MCPS package is protected with its own dongle and password. The password determines which options and drivers are available. If you would like to purchase further options/drivers, you will (only) receive a new password (32 characters) from us, which activates the desired functions (specify serial number!!!). MCPS is always delivered complete (maximum functionality) and is only restricted by the password. Therefore, there is NO need to replace a dongle when expanding!

When starting MCPS, the password may already be requested. Otherwise, a new password will be entered in the MCPS at <Configuration/MCPS Settings>. Up to 10 passwords can be entered in the "password table", one of which must be valid (the first valid password is used). If the program only starts in demo mode, the password must be checked. The password is available for easy copying on the data carrier (CD or stick).

### 3. Registration

#### Registration card

Dear customer,

in case of technical support or later program updates, it's necessary for us to have some information about your application environment and the software, you're using. Therefore we request you to send us this sheet as soon as possible by fax or use Register.DOC from the Installation medium and send the registration sheet by E-Mail.

Thank you!

**CAD Computer GmbH & Co. KG**  
**Mackensteiner Str.19**  
**D – 41751Viersen**  
**Tel.: +49 2162 81615 - 0**  
**Fax: +49 2162 81615 - 22**  
**E-Mail: [Support@CAD-Computer.de](mailto:Support@CAD-Computer.de)**

Company:	
Division:	
Name:	
Street:	
Zip code, city:	
Telephone:	
Fax:	
E-Mail:	
Dongle number:	